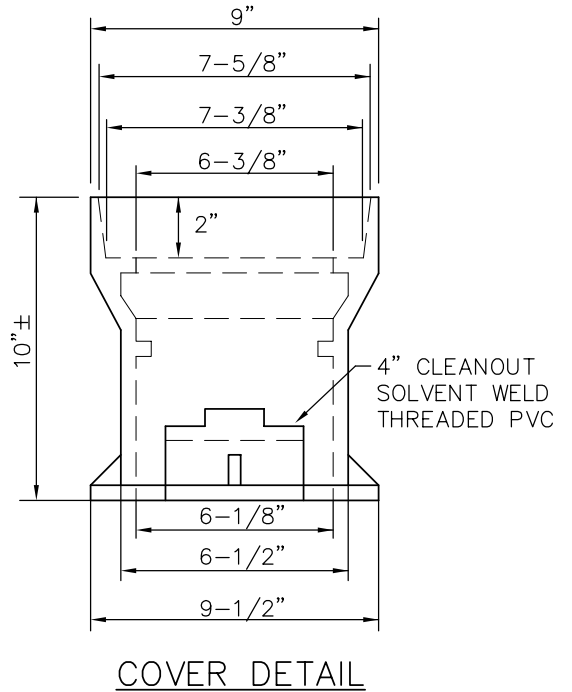


NOTES:

1. COVER SHALL HAVE A LOCKING LID MARKED "SEWER".
2. TYLER SERIES 6855 SLIP TYPE TOP SECTION, D & L SUPPLY SERIES M8056 OR EQUAL.
3. I.D. = 6-1/8".



No_XREFs
I:\Key_Std\SAS\Details\dwg\Sasd-PRI-4s.dwg

Kennedy/Jenks Consultants
Engineers & Scientists

143 Union Boulevard
Suite 600
Lakewood, CO 80228
303 985 3636 TEL
303 985 3800 FAX



SOUTH ARAPAHOE
SANITATION DISTRICT

www.southarapahoe.org

**IN-LINE CLEANOUT
DETAIL**

DRAWING NO.: SASD-PRI-4S DATE: 5/08