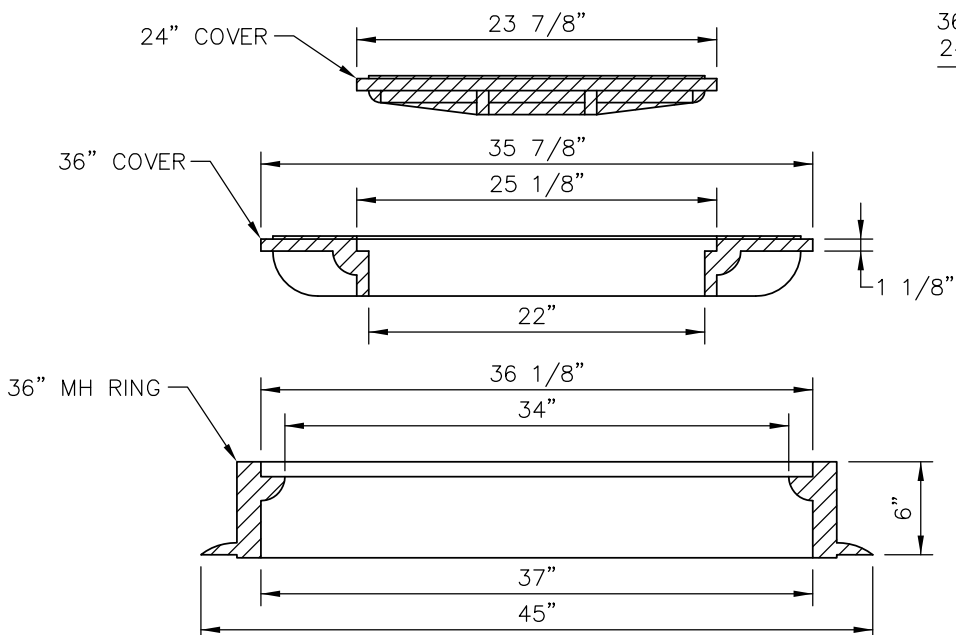


PLAN

NOMINAL WEIGHT

RING=	280#
36" COVER=	250#
24" COVER=	165#
TOTAL=	695#



SECTION A-A

NOTES:

- CASTING SPECIFICATIONS: ASTM A-48 WITH A MINIMUM TENSILE STRENGTH OF 25 KSI (CLASS 25) PER CITY OF CENTENNIAL STANDARDS
- ALL CASTINGS TO BE DIPPED IN ASPHALT BASED PAINT (OR APPROVED EQUAL).
- CASTINGS SHALL BE AS SPECIFIED BELOW OR EQUAL:

<u>MANUFACTURERS</u>	<u>CAT. NO.</u>
NEEHAH FOUNDRY CO.	R-1740-D2
CONSTRUCTION CASTINGS	J-1425 (SHOWN)
- TOP OF MANHOLE COVER SHALL BE 1/4" TO 1/2" BELOW GRADE OR PER CITY/COUNTY REQUIREMENTS

No XREFs i:\Key_Std\SAS\Details\dwg\Sasd-PUB-11s.dwg

Kennedy/Jenks Consultants
Engineers & Scientists
 143 Union Boulevard
 Suite 600
 Lakewood, CO 80228
 303 985 3636 TEL
 303 985 3800 FAX

SOUTH ARAPAHOE
SANITATION DISTRICT
 www.southarapahoe.org

**DOUBLE MANHOLE
 COVER DETAIL**