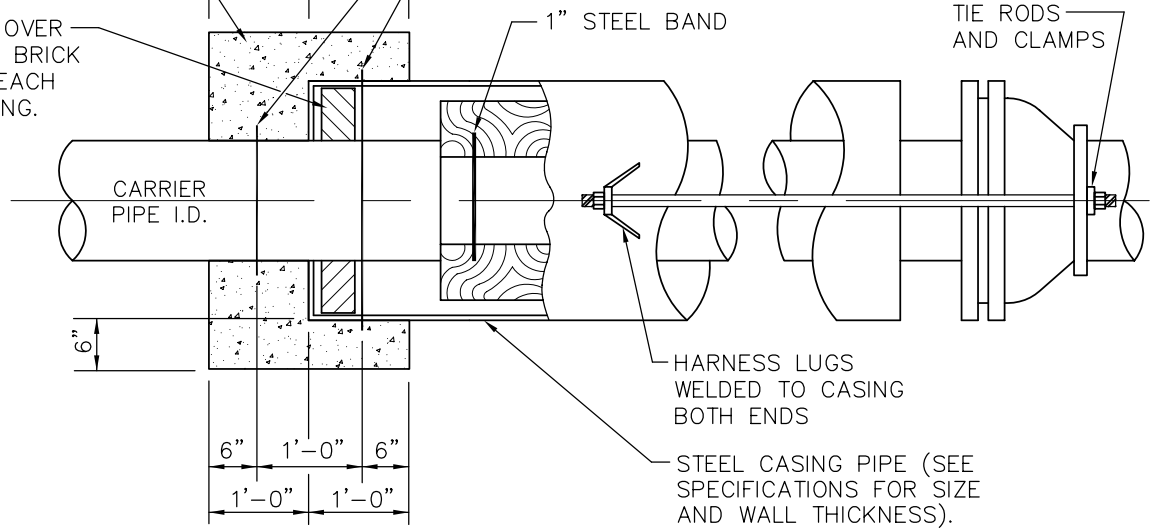


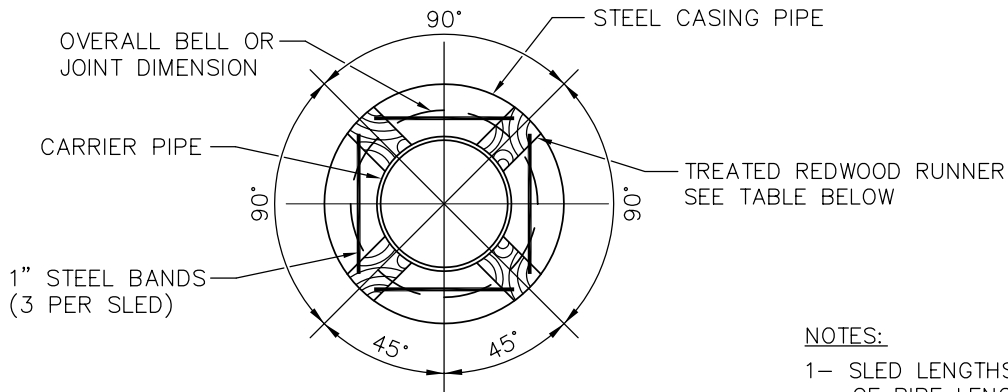
CONCRETE ENCASEMENT
OR CONCRETE COLLAR

1/2" GROUT OVER
1 FOUR INCH BRICK
COURSE AT EACH
END OF CASING.

SEALING—INSTALL RUBBER O-RINGS OR
GASKETS AROUND EACH PIPE (CASING
AND CARRIER) TO PROVIDE CONTINUOUS
WATERTIGHT SEAL, TO PREVENT
EXPANSION & CONTRACTION.



SLED DETAIL



NOTE:
NEOPRENE OR PVC RUNNERS MAY BE USED
AS AN ALTERNATIVE TO TREATED REDWOOD.

NOTES:

- 1- SLED LENGTHS TO BE 75% OF PIPE LENGTHS.
- 2- HARNESS LUGS TO BE INSULATED FROM D.I. PIPE

PIPE CASING DETAIL

PIPE DIA.	CASING PIPE		RUNNER SIZE
	MIN. O.D.	MIN. WALL THICKNESS	
8"	18"	0.375"	4" x 4"
10"	20"	0.375"	4" x 4"
12"	22"	0.375"	4" x 4"
15"-21"	28"	0.406"	4" x 4"
24"-30"	32"	0.469"	4" x 6"

No. XREFs I: \Key_Std\SAS\Details\dwg\Sasd-PUB-23s.dwg

Kennedy/Jenks Consultants
Engineers & Scientists
148 Union Boulevard
Suite 600
Lakewood, CO 80228
303 985 3636 TEL.
303 985 3600 FAX



SOUTH ARAPAHOE
SANITATION DISTRICT
www.southarapahoe.org

**PIPE CASING AND
SLED REDWOOD
RUNNERS DETAIL**