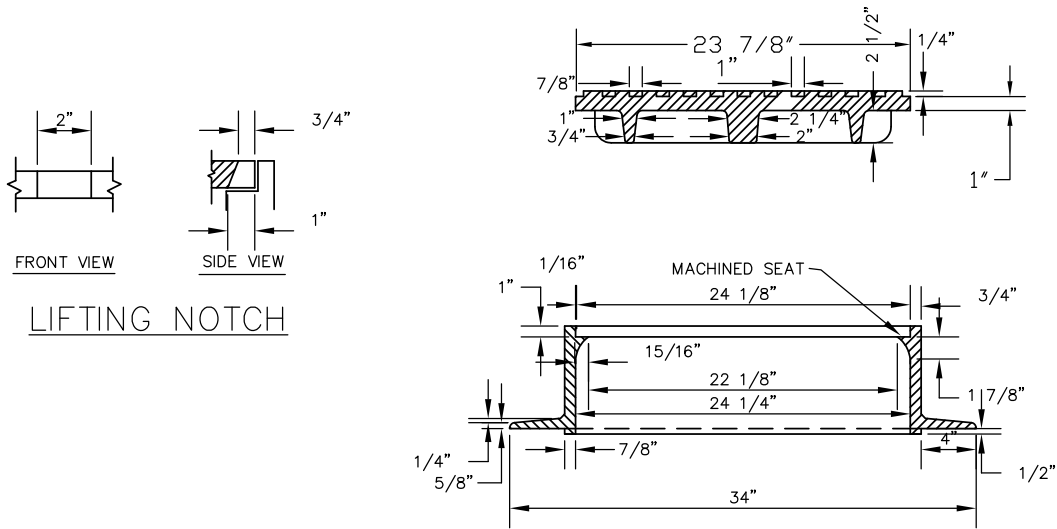
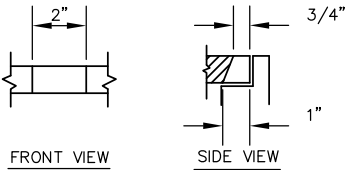


PLAN



SECTION A-A



LIFTING NOTCH

NOTE:

1. CASTING SPECIFICATIONS: ASTM A-48 WITH A MINIMUM TENSILE STRENGTH OF 25 KSI (CLASS 25) PER CITY OF CENTENNIAL STANDARDS
2. TOP OF MANHOLE COVER SHALL BE 1/4" TO 1/2" BELOW GRADE OR PER CITY/COUNTY REQUIREMENTS
3. CASTINGS SHALL BE AS SPECIFIED BELOW OR EQUAL: (CAST IRON ONLY)

MANUFACTURERS	CAT. #
NEENAH	R-1706
CASTINGS, INC.	MH-400-24 C.I.
HUTCHINSON FDRY. & STL. INC.	MH-400
DEETER	1258

No XREFs i:\Key\_Std\SAS\Details\dwg\Sasd-PUB-8s.dwg

**Kennedy/Jenks Consultants**  
Engineers & Scientists

143 Union Boulevard  
Suite 600  
Lakewood, CO 80228  
303 985 3636 TEL  
303 985 3800 FAX



**SOUTH ARAPAHOE**  
SANITATION DISTRICT  
www.southarapahoe.org

**24" MANHOLE  
RING AND COVER  
DETAIL**